

Cooling & Heating Equipment Pty Ltd



Cooling and Heating Equipment Units are manufactured with:

- Aluminium penta-post frames.
- Optional thermally broken construction to prevent cold tracking.
- Polyurethane injected panels 50 & 75mm thick.
- Double or single skin units
- 304 stainless steel drain pans as standard.
- High Efficiency fan solutions.
- 316 Plastic Coated Galvanized Sheet Metal.
- Air Handling Units available in a variety of corrosion resistant options constructed from 304 & 316 stainless steel plastic coated galvanized sheet metals.
- EC Motors & (AC Motors Optional).
- Horizontal, vertical and multizone configurations.
- Chilled Water.
- Hot Water.
- DX
- Steam and Glycol Coil Solutions.
- UV lights optional

Air Handling Units

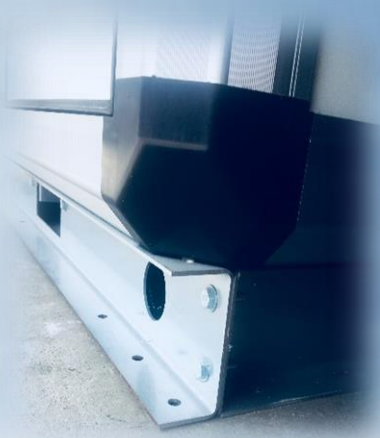
Air Handling Units Cooling and Heating Equipment is a manufacturer and supplier of high quality products, including the ECCool and ECHeat Air Handling and Fan Coil Units Range.

Cooling and Heating Products are built and designed to Australian, New Zealand and Asia Pacific Conditions and are built to Australian Standards AS/NZS 3666 and manufactured in accordance with EN1886:2007.

AHU's are supplied with a large range of high efficiency fans ranging from EC or AC Plug Fans and belt driven forward or backward curve options.



Air Handling Units Components



Base Unit

Manufactured using 3mm folded galvanised sheet metal.

Base heights can be built using the standard 100mm to 400mm which allows for the inclusion of a U trap or plinth removal.



Drain Pan

Manufactured using 304 stainless steel. Compliant with Australian Standards NZS 3666.



Insulated Panel

Polyurethane Panels are 25mm, 50mm and 75mm thick
Galvanised SS304 & SS316
Aluminium optional



Damper

Standard dampers are manufactured in aluminium with aerofoil blades and extruded frames. 304 Stainless steel is optional



Inward Opening Door

Polyurethane injected panels 50 & 75 mm thick. Inward opening for safety and less leakage.



Filters

Side and Front Loading Filters
Washable pre-filters
Disposable deep bed filters
304 Stainless steel or galvanised filter frames available