

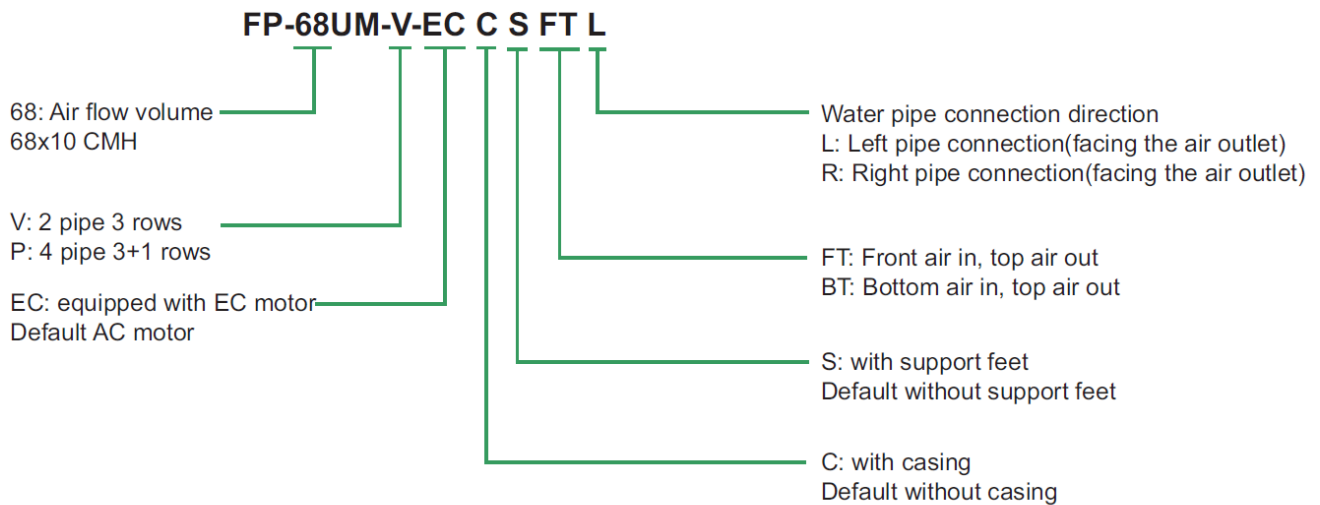
Model: FP-UM series

FP-UM-V: 2 pipe 3 rows
 FP-UM-P: 4 pipe 3+1 rows

Air Flow: 200 ~ 1200cfm
 Cooling Capacity: 2.0KW~10.8KW



Nomenclature



Design Features

Centrifugal Fan

Well-known brand centrifugal fans, with galvanized steel and which is statically and dynamically balanced.

High Efficiency Coil

Coil are made of 3/8"(9.52mm) O.D copper tubes and high exchange surface area aluminum blue fins. All coils are 100% tested against leaks by 30bar(3Mpa) air pressure. with 3/4" pipe connections and air bleed vent.

Condensate Drain Pan

L shaped drain pan, suitable for horizontal and/or vertical installation.

Standard:

- AC motor
- Without casing, without support feet

Optional:

- a. With casing, with support feet
- b. Left or right water pipe connection;
- c. On/off 2-way or 3 way valve
- d. Electric Heater
- e. Thermostat or 3-speed switch

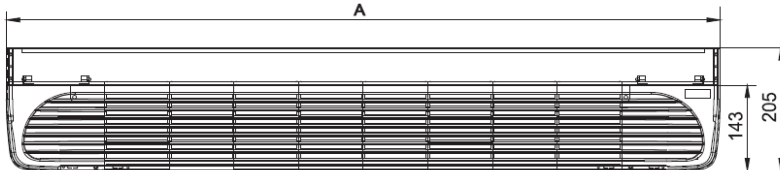
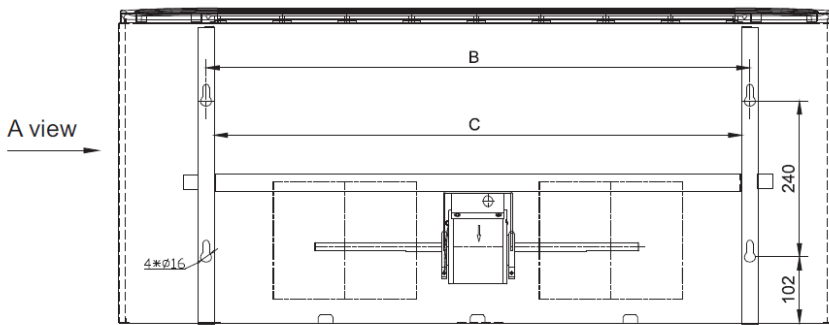


Universal Fan Coil Unit

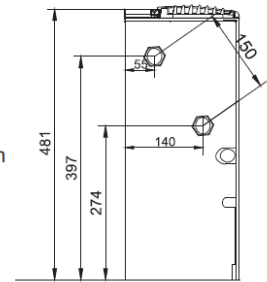
Performance Data - 2 pipe, 3 rows / 4 pipe, 3+1 rows

Model: FP-*UM			FP-34UM	FP-51UM	FP-68UM	FP-85UM	FP-102UM	FP-136UM	FP-170UM	FP-204UM	
CFM			200	300	400	500	600	800	1000	1200	
Air Flow Rate	H	m³/h	380	510	680	850	1020	1360	1700	2040	
	M	m³/h	300	420	550	680	850	1020	1360	1700	
	L	m³/h	250	360	450	550	650	850	1100	1360	
Cooling	Total Capacity	H	KW	2.0	2.7	3.8	4.5	5.5	7.4	9.0	10.8
		M	KW	1.6	2.3	3.0	3.8	4.6	5.6	7.3	9.0
		L	KW	1.3	1.9	2.5	3.0	3.5	4.6	5.9	7.3
	Sensible Capacity	H	KW	1.6	2.1	3.0	3.6	4.4	5.9	7.2	8.6
		M	KW	1.3	1.3	2.4	3.0	3.7	4.4	5.8	7.2
		L	KW	1.0	1.5	2.0	2.4	2.8	3.7	4.7	5.8
Water flow rate		l/h	345	460	650	770	1030	1200	1550	11850	
Water pressure drop		kPa	10	17	16	18	23	29	38	40	
Heat	2pipe Heating Capacity	H	KW	2.8	4.0	5.4	6.7	8.0	10.8	13.5	15.0
		M	KW	2.2	3.4	4.3	5.4	7.0	8.0	11.0	13.5
		L	KW	1.8	2.8	3.6	4.3	5.5	7.0	8.9	11.0
	4pipe Heating Capacity	H	KW	1.7	2.3	3.0	3.7	4.3	5.8	7.4	8.8
		M	KW	1.3	1.9	2.4	3.0	3.6	4.4	5.9	7.4
		L	KW	1.1	1.6	2.0	2.4	2.7	3.6	4.8	5.9
	Water flow rate		l/h	150	200	260	320	370	500	640	760
	Water pressure drop		kPa	4	6	10	13	17	21	30	35
Power supply			220~240V/1PH/50Hz(or 60HZ)								
Power Input	W	60	65	67	95	105	156	183	190		
Sound pressure	dB(A)	38/37/34	39/37/35	42/41/39	45/43/41	47/45/43	48/46/44	50/48/46	52/50/48		
Fan	Type	Centrifugal Fan									
	Model	SYP130/190J	SYP130/190J	SYP130/190J	SYP130/190J	SYP130/190J	SYP130/190J	SYP130/190J	SYP130/190J		
	Quantity	Nr.	1	1	2	2	3	3	4	4	
Motor	Type	3-speed Motor									
	Quantity	Nr.	1	1	1	1	2	2	2	2	
Coil	Coil Rows	Nr.	2-pipe system: 3rows; 4-pipe system: 3+1rows								
	Max. working pressure	MPa	1.6								
	Tuber Diameter	inch	3/8"								
Connection	Water inlet/outlet pipe	inch	ZG3/4" / ZG3/4"								
	Condensate discharge	inch	26								
Weight(with feet) 2-pipe/4-pipe		kg	19/20	21/22	26/28	26/28	38/40	38/40	44/48	44/48	
Weight(no feet) 2-pipe/4-pipe		kg	17/18	19/20	24/26	24/26	36/38	36/38	42/46	42/46	

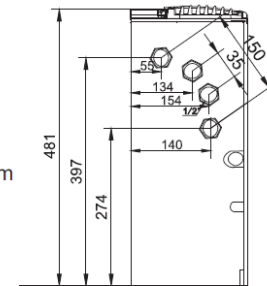
- Cooling: inlet air temp. DB+27°C/WB+19.5°C, water inlet/outlet temp. +7°C/+12°C
- Heating: +21°C, water inlet temp. +60°C; Same water flow rate as for the cooling



A view
2-pipe system



A view
4-pipe system



Model	FP-34UM	FP-51UM	FP-68UM / FP-85UM	FP-102UM / FP-136UM	FP-170UM / FP-204UM
A	805	905	1105	1605	1905
B	525	625	825	1325	1625
C	500	600	800	1300	1600

The height of the support feet is 100mm(optional)

(mm)